

# **ILab Aries Translator User Guide**

## INDEX

1.	Revision History .....	3
2.	Aim and application field .....	3
3.	Installation Procedure.....	4
4.	How to launch and use the Software.....	6
5.	Direct mode.....	8
5.1.	Paramters.....	8
5.2.	Active checks.....	9
5.3.	Seeking words.....	10
5.4.	Brief notes .....	10
5.5.	Warning messages .....	10
5.6.	Reset Button .....	10
6.	Indirect mode.....	11
6.1.	Export Procedure.....	11
6.2.	Accessing the exported .ini file.....	13
6.3.	Import procedure.....	14
6.4.	Warning messages .....	15
6.5.	Reset Button .....	16

## 1. REVISION HISTORY

Rev.	Description of revision	Author	Date of issue
00	First issue	A. Giovagnoni F. Mascitelli	11/28/2008
01	Few corrections	A. Giovagnoni F. Mascitelli	12/01/2008
02	Introduction of Reset Button (see section 5.6 and section 6.5)	A. Giovagnoni F. Mascitelli	31/03/2009

## 2. AIM AND APPLICATION FIELD

Aim of this document is to describe how to use the Translator Software applicable to ILab Aries instrument.

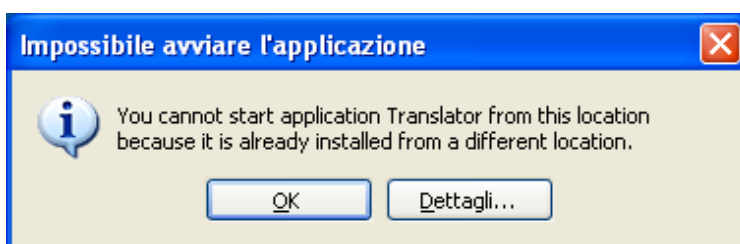
### 3. INSTALLATION PROCEDURE

User shall proceed to extract all files from translator\_installer.zip using an appropriate software (like WinZIP).

Once the user has extracted all the files, he shall double click on setup.exe file.

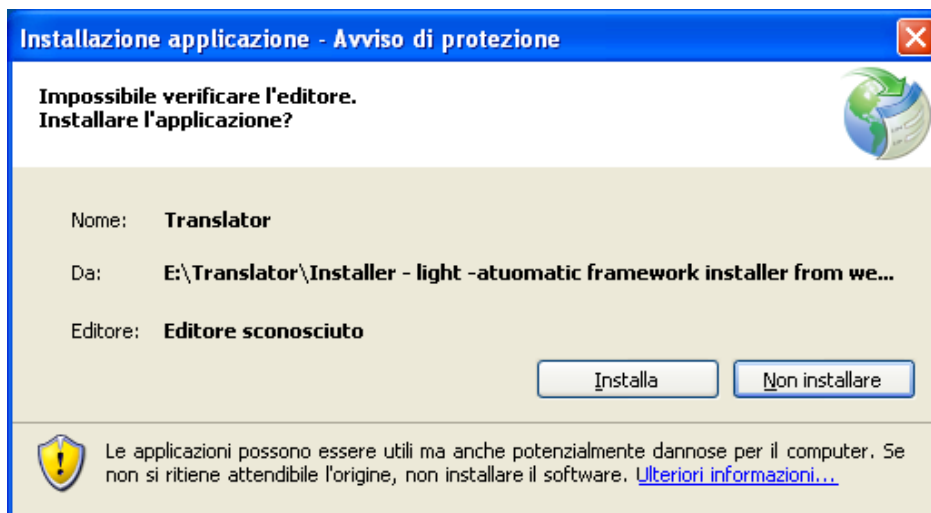
#### Note

If a previous installation of the Translator.exe file is present on Your computer it will appear following Information Message.



In this case if you want to install the new Translator.exe version, please use the Windows Control Panel in order to uninstall the previous Translator.exe and re-launch the setup.exe.

After few seconds, following window will appear.



Please click on Install button, to proceed.

After few seconds, the Common Dialog Window, described in section 4, will appear; it will allow the user to choose the Instrument.mdb file that has to be translated.